

Reduce TCO

With FibeAir® IP-20C

Saving CAPEX and OPEX in high-capacity wireless backhaul

FibeAir IP-20C

Guaranteed 1Gbps over a single channel in 6-42MHz



Multi-core Radio

Compact Design

Integrated CE Switch

4x4 MIMO

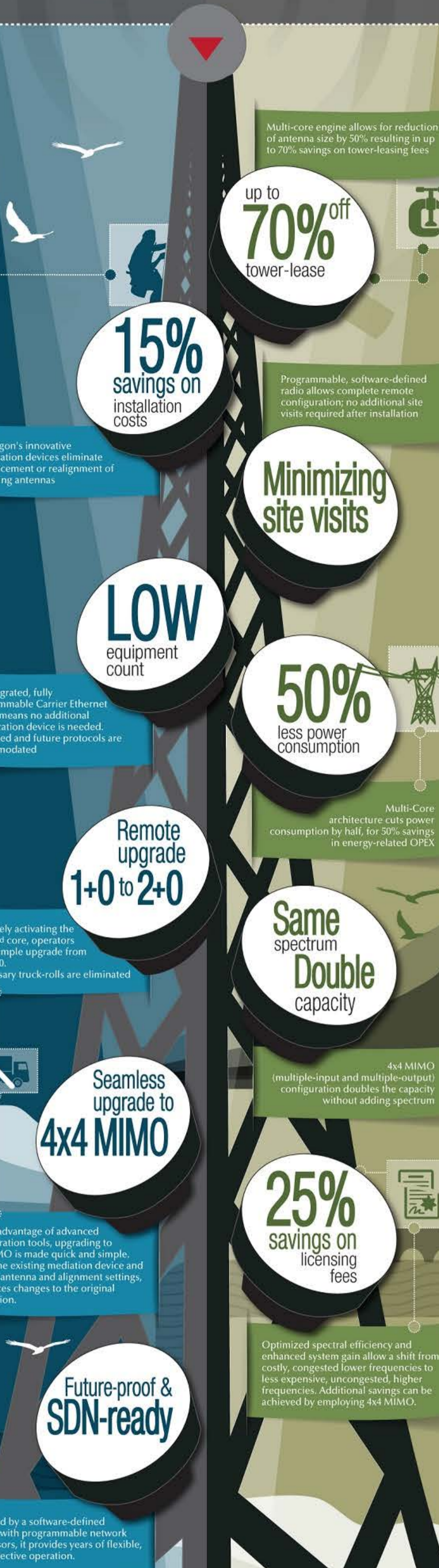
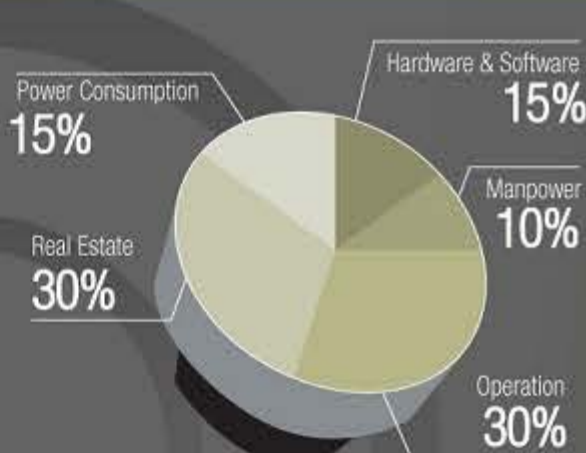
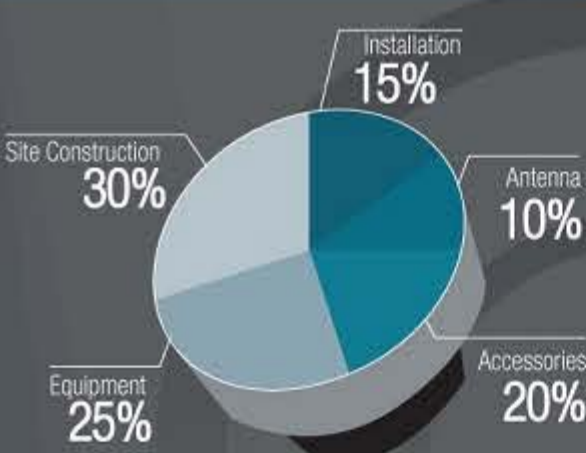
2048 QAM

Software-Defined Engine

Typical TCO breakdown in 3G/4G networks

CAPEX

OPEX



FibeAir IP-20C is the industry's first Multi-Core radio solution for demanding wireless backhaul and fronthaul applications. Combining its multi-core technology with 2048 QAM modulation and line-of-sight 4x4 MIMO in a compact, green, all-outdoor design, FibeAir IP-20C pioneers a new standard in microwave transmission

For more information: www.ceragon.com/products